

# LEGEND

## Property Geology (W. Gruenwald, 1977: AR 06527) - Outcrop shaded dark

- CONG - Kamloops Group - Conglomerate, primarily volcanic with minor limestone and intrusive pebbles, some sandstone seams
- BAS - Kamloops Group - Red, brown, purplish and black flows, breccias and tuffs
- LST - Gray to white, fine grained, locally fossiliferous limestone, minor quartzite
- GRAN - Guichon Creek Batholith - Pink, medium grained, fresh granitic phase
- DIO - Guichon Creek Batholith - Medium grained, weak to moderately altered quartz diorite and diorite
- QFP - Copper Creek Intrusions - Quartz-feldspar porphyry
- AND - Nicola Group - Green, brown and purplish andesitic flows, fine grained to coarse grained tuffs, feldspar porphyries, medium grained to coarse grained quartz feldspar porphyries, breccias (some with limestone fragments), welded tuffs and minor argillite



# Property Geology



**GOLDLION**  
RESOURCES

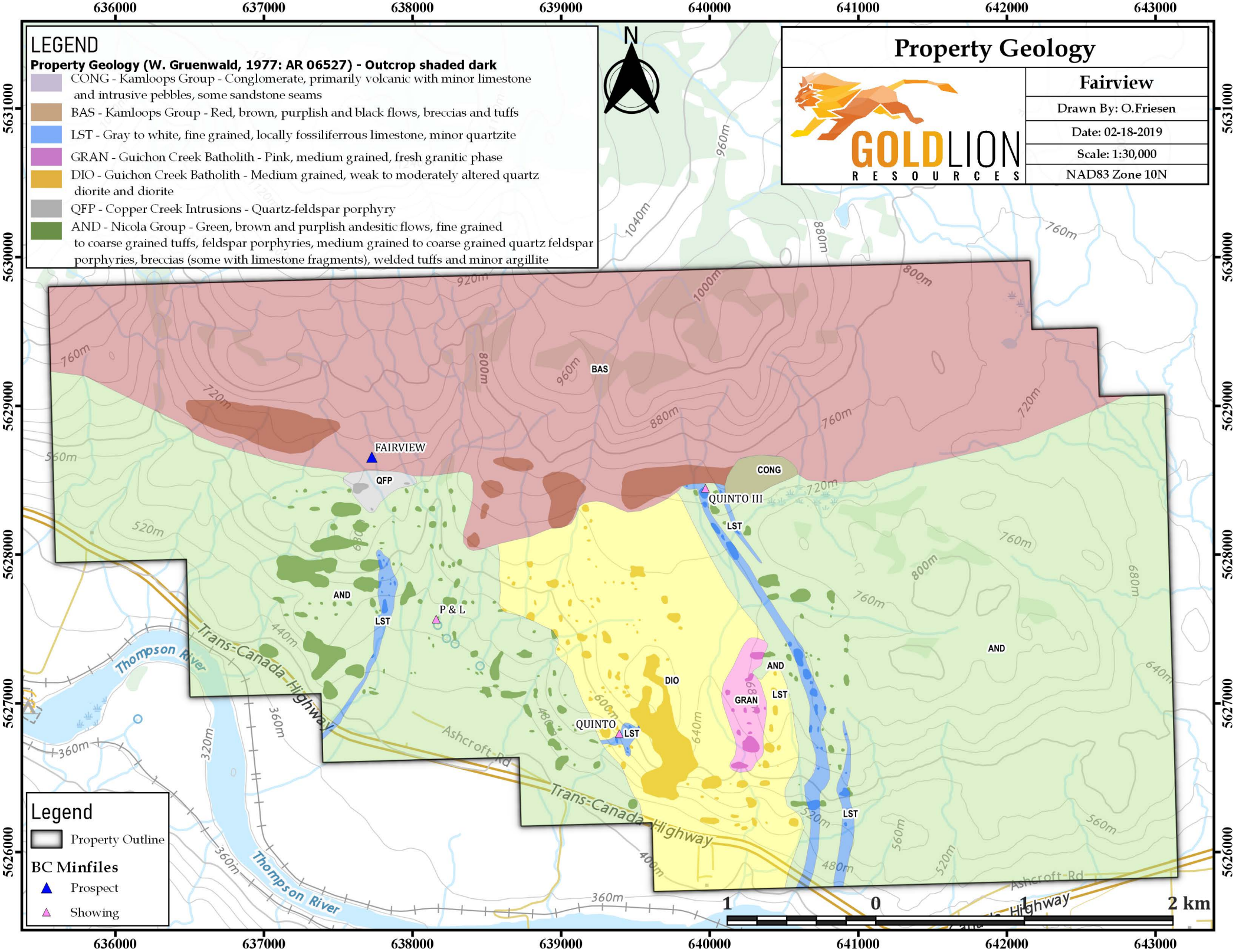
## Fairview

Drawn By: O.Friesen

Date: 02-18-2019

Scale: 1:30,000

NAD83 Zone 10N



# Legend

- Property Outline
- BC Minfiles
- Prospect
- Showing

