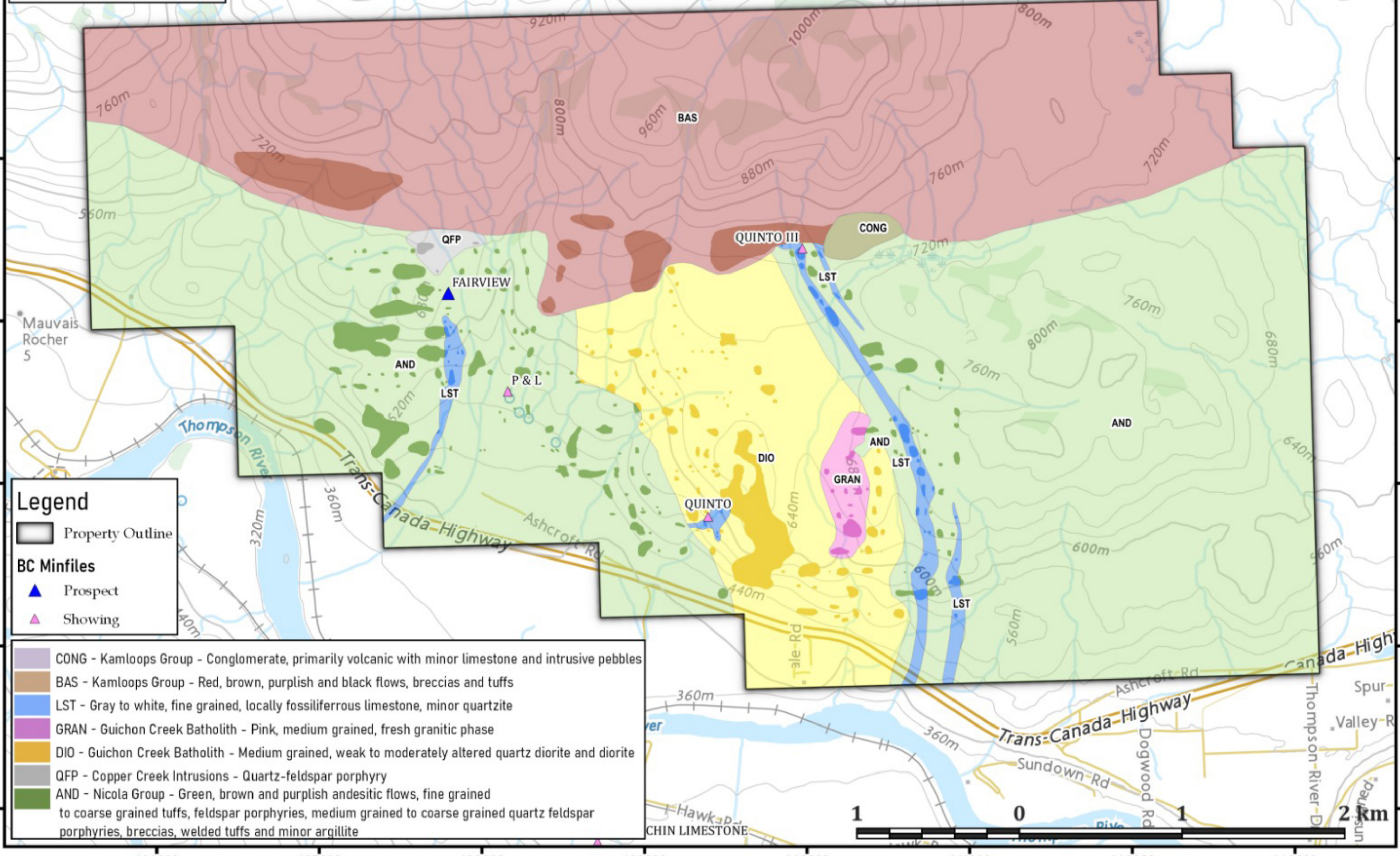


Figure 1. - Property Geology



Fairview Property
 Drawn By: O.Friesen
 Date: 12-02-2019
 Scale: 1:32,000
 NAD83 Zone 10N



Legend

- Property Outline
- BC Minfiles
- Prospect
- Showing

Legend

- CONG - Kamloops Group - Conglomerate, primarily volcanic with minor limestone and intrusive pebbles
- BAS - Kamloops Group - Red, brown, purplish and black flows, breccias and tuffs
- LST - Gray to white, fine grained, locally fossiliferous limestone, minor quartzite
- GRAN - Guichon Creek Batholith - Pink, medium grained, fresh granitic phase
- DIO - Guichon Creek Batholith - Medium grained, weak to moderately altered quartz diorite and diorite
- QFP - Copper Creek Intrusions - Quartz-feldspar porphyry
- AND - Nicola Group - Green, brown and purplish andesitic flows, fine grained to coarse grained tuffs, feldspar porphyries, medium grained to coarse grained quartz feldspar porphyries, breccias, welded tuffs and minor argillite

